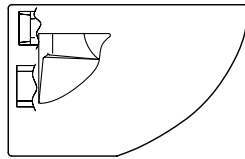
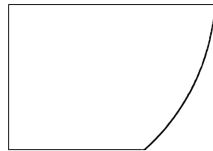


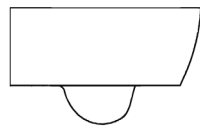
In-Wall Tank Toilet Installation Guide



LW6008



LW6010



LW6020

Attention – Before Installation

If you are installing this product in a new construction or remodel, please make sure you are following all local plumbing and building codes. Carefully unpack and examine your new fixture for damage. To help insure that the installation process will proceed smoothly and correctly, please read these instructions carefully before you begin.

- We recommend that the installation be done by a minimum of 2 people as a security precaution. Also make sure to adopt the proper posture when lifting the basin.
 - Adhere to all local building and plumbing codes. The diagrams in this guide are not construction plans. They are visual aids.
1. Inspect this product to assure you have all parts as shown that are required for proper installation. Blu recommends that the installer refer to the Geberit toilet system installation and maintenance instructions.
 2. Read this entire instruction sheet to ensure proper installation.
 3. Compliance and conformity to local building codes and ordinances is the responsibility of the installer.
 4. Compliance and conformity to local fire codes and ordinances is the responsibility of the installer.
 5. Purge all the water supply lines before making connections.

Installation Requirements

Please read the instructions carefully so as to avoid any damage to the fixture.

1. To ensure this product is installed properly, you must read and follow these guidelines.
2. The owner/user of the product must keep this information for future reference.
3. Consult local building codes to make sure the installation complies with standards.
4. Remove the unit from its packaging. Before disposing of it, inspect the unit to make sure its in good shape. Should inspection reveal any damage or defect in the finish, contact your distributor. The warranty does not cover damages or defects in the finish once it has been installed. Blu Bathworks' responsibility for shipping damages ceases upon delivery of the product in good order to the carrier. All complaints regarding damage due to transport must be made directly to the carrier.
5. Place the unit in the bathroom before you start working. Conserve all nuts and bolts.
6. To protect the unit during installation, we recommend that you lay a piece of cardboard on the bottom.
7. If the unit is covered with polyethylene protective film, do not remove until installation is complete to grant maximum protection. However, remove film where any two surfaces will be in permanent contact.
8. Verify that all dimensions on the plan are the same as the ones of the unit.
9. For use on installations with vertical discharge only. **DO NOT CUT DISCHARGE PIPE.**
10. 3" DWV vertical waste line connection.
11. Water supply will be 1/2" copper, recommended water pressure from 25 PSI to 90 PSI.
12. Materials suitable for wall construction include Gypsum-green board, cement board, or tile backer board. Wall thickness not to exceed 2".
13. When installing remote actuator, use of access panel kit (461.043.00.1 or 115.767.11.1) is recommended.
14. When mounting bowl on tile or marble, use of a tile cushion pad (156.055.00.1) is recommended.
15. All installations must conform to local and national plumbing, building and fire codes.
16. Inspect this product to assure you have all parts required for proper installation.
17. Do NOT use putty during this installation.

Cleaners for Fittings and Accessories

To avoid damaging the surface and working components of the fittings, certain precautions must be taken in terms of usage and subsequent cleaning as many cleaning agents contain acids for general cleaning and removing calcium deposits. When caring for your fittings and accessories, please note the following:

- Only apply cleaners which are expressly intended for the use
- Never use any cleaner containing hydrochloric acid, formic acid or acetic acid on or near the fitting, as they can cause considerable damage even with just one application
- Do not use cleaners containing phosphoric acid
- Do not use cleaners containing chlorine bleach solutions
- Never mix or combine cleaning agents
- Abrasive cleaners and unsuitable scouring agents such as scouring pads.

Installation Notes

Important! Install this product according to the installation guide. Our products must be installed by certified professionals only and according to our installation guide as well as federal, provincial / state and local building codes and regulations.

Technical Support Assistance

If further assistance is required, please contact:

Product Support at 1.866.907.0122 (09:00 - 17:00hrs PST) or email technical@blubathworks.com

North America

Blu Bathworks Inc.

3614 East 1st Ave, Vancouver, BC, Canada, V5M 1C3

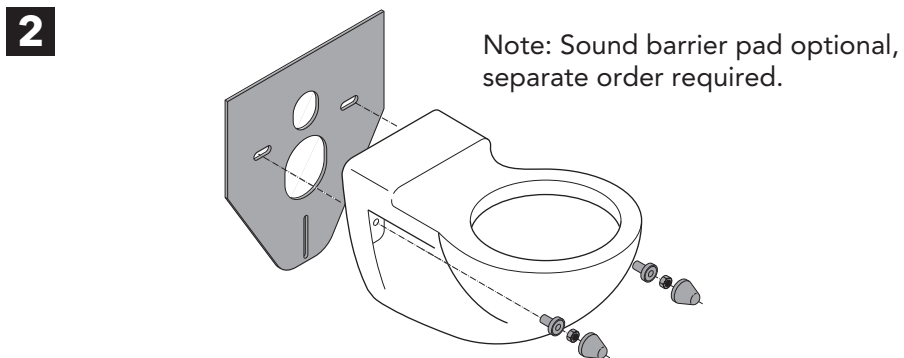
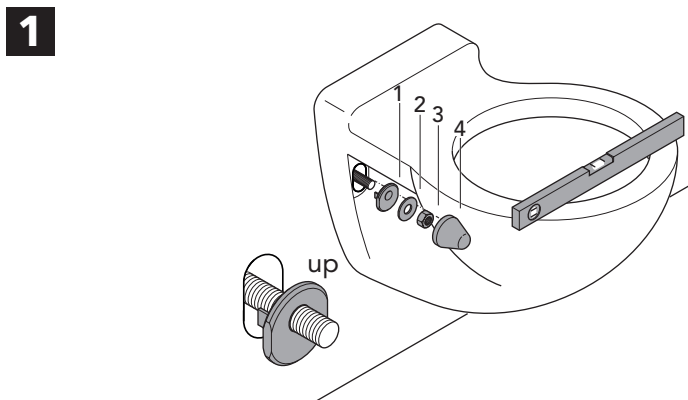
T +1.604.299.0122 F +1.604.299.0125

Installation Instructions

Refer to the Geberit installation and maintenance instructions prior to the installation of these products.

Refer to Illustrations 1, 2, & 3

1. Place the bowl onto the fixture rods.
2. Install cap retainers (1), washers (2) and nuts (3). Secure bowl with nuts, hand tight only.
Note: Cap retainers (1) should be installed with the larger end facing up.
3. Level the bowl, then tighten nuts. DO NOT OVERTIGHTEN NUTS.
4. Snap caps over retainers (4).



Maintenance

REGULAR MAINTENANCE

- Wipe the toilet seat with soft wet cloth
- Clean the toilet seat with neutral cleanser, and then dry it with clean cloth

ERADICATOR

- Don't clean the toilet seat with lapping powder
- Don't use any disinfectant, eradicant or spraying cleanser
- Keep toilet seat away from chemicals and cosmetics

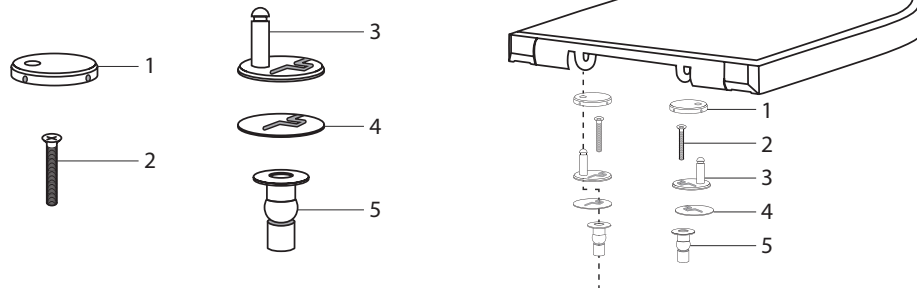
Cautions

- Please do not close the seat or cover forcibly to extend the soft-close function lifespan.
- Please do not clean the seat or cover with strong chemical cleansers or rigid brushes. (To avoid harming the seat & cover)

Toilet Seat Installation Instructions

1. Install hinges, hand tightened.
2. Set seat and align hinges in position.
3. Remove seat and tighten with screwdriver until it is snug.
4. Replace seat on hinges, seat should be secure with minimal movement, if not retighten.

HS01



Warranty

Blu Bathworks prides itself on excellence in technology, design and quality control. Every effort has gone into making each Blu Bathworks product perform to the highest standards possible and to satisfy the Customer. Blu Bathworks provides the following limited warranties on its products:

Limited Ceramics Residential Warranty

Blu Bathworks ("Blu") ceramic products are warranted to the original purchaser to be free from defects in all material and workmanship during normal residential use for a period of one (1) year from the date of purchase. Blu will, at its election, repair, provide a replacement part or product, or make appropriate adjustment, subject to the terms and conditions set forth in this warranty.

Limited blu.stone™ Residential Warranty

Blu Bathworks ("Blu") blu:stone products are warranted to the original purchaser to be free from defects in all material and workmanship during normal residential use for a period of five (5) years from the date of purchase. Blu will, at its election, repair, provide a replacement part or product, or make appropriate adjustment, subject to the terms and conditions set forth in this warranty. Blu Bathworks does not recommend exceeding US/Canada maximum hot water temperature regulations of 120°F/50°C, respectively. Exceeding stated temperatures could result in damage to blu.stone basins and bathtubs.

Limited Acrylic Bathtubs Residential Warranty

Blu Bathworks ("Blu") acrylic bathtubs are warranted to the original purchaser to be free from defects in all material and workmanship during normal residential use for a period of five (5) years from the date of purchase. Blu will, at its election, repair, provide a replacement part or product, or make appropriate adjustment, subject to the terms and conditions set forth in this warranty.

Limited Tapware Residential Warranty

Blu Bathworks ("Blu") tapware products are warranted to the original purchaser to be free from defects in all mechanical parts and polished chrome finishes during normal residential use for as long as the original purchaser owns his or her home. Blu will, at its election, repair, provide a replacement part or product, or make appropriate adjustment, subject to the terms and conditions set forth in this warranty.

Limited Commercial Warranty

Blu Bathworks ("Blu") products are warranted to the original purchaser to be free from defects in all material and workmanship during normal usage for a period of one (1) year from the date of purchase. Blu will, at its election, repair, provide a replacement part or product, or make appropriate adjustment, subject to the terms and conditions set forth in this warranty..

Warranty Terms and Conditions

- This warranty applies only to Blu Bathworks products distributed in North America.
- This warranty is non-transferable and is for the exclusive benefit of the original purchaser of a Blu product. This warranty may be exercised by the original purchaser of a unit in a new residential development. Blu recommends using a professional plumber for all installation and repair. This warranty does not apply to products that have been installed in any manner other than as set out in Blu's printed instructions, or to products that have been altered in any way.
- For further clarity, the above stated warranty does not cover or apply to damage attributable to:
 1. Neglect, misuse, abuse, accident or negligence;
 2. Normal wear and tear;
 3. Proximity to salt water, dirt or lime scale, the use of plumbers' putty or inappropriate cleaners (such as those containing abrasives, ammonia, acids, waxes, bleaches, solvents, alcohol, or any product not recommended for chrome); and
 4. Damage caused by transportation, or improper storage.
- This is the only warranty of Blu, which makes no other warranty of any kind. Blu disclaims any liability for charges due to installation, removal, shipping, or any special, incidental or consequential damages whatsoever. In no event shall the liability of Blu under this warranty exceed the purchase price of the product.

Procedure for Warranty Service

Refer to blubathworks.com for policy and procedures relating to requests for service under the terms of this warranty. Original proof of purchase is required. Blu is not responsible for removal or installation costs, or the costs of shipping and handling associated with any service. Repaired or replaced products or parts are warranted only for the period remaining under the initial warranty.