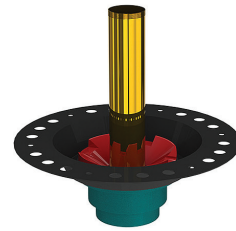


BTWasteCI.RN SPECIFICATIONS

cast iron island tub drain rough-in for freestanding bathtubs

FEATURES:

- Freestanding tub rough-in, can be used for blu-stone™ & acrylic bathtubs (install before tile installation)
- Easier + faster installation of freestanding bathtubs in highrise condominium projects
- 18 Gauge Epoxy coated Metal Deck Flange
- 1½" pipe size connection with Cast iron body
- Designed to be installed in an 8"/10" joist space
- Can be installed with Waterproofing Membrane
- Brass tailpiece



SPECIFICATIONS:

Warranty: Limited lifetime warranty (residential)
One year warranty (commercial)

Material: Cast Iron body

ACCESSORIES (included):

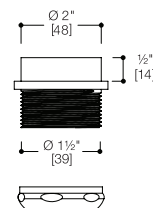
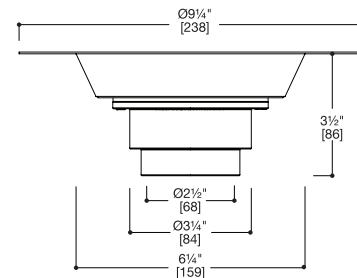
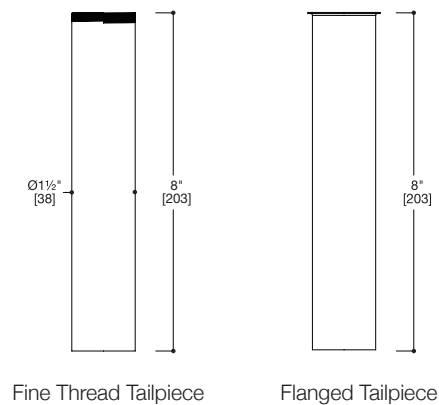
- Adapter Kit
- Cast iron body with 1½" pipe size connection
- 2 x 17G Brass Tailpieces (fine threaded & flanged)
- Protective film over opening to keep out debris during rough-in stage
- Cutting template

INSTALLATION

Install this product according to the installation guide. Our products must be installed by certified professionals only and according to our installation guide as well as federal, provincial/state and local building codes and regulations.

CODES / STANDARDS APPLICABLE:

- Meets or exceeds ANSI / ASME standard A112.18.1 and CAN / CSA B125.1-05 requirements
- CSA / UPC / cUPC



ABS or PVC Adaptor Kit



*Approximate measurements for comparison only.
Note: These dimensions and specifications are subject to change without notice.